

DOOR SCHEDULE

NO.	ROOM NAME	SIZE	TYPE	THICK.	MAT.	CORE	GLAZ.	DOOR			FRAME			ASSUR'Y	REMARKS			
								STOP	SHG	STP	SHG	STP	SHG			STP	SHG	STP
10A	VESTIBULE (EXT)	(2) 3'-0" X 8'-0"	D1	1-3/4"	CLD	NO	INS/IMP	FAC	FAC	FAC	PT	PT	PT	PT	6'-0" X 8'-0"	FI	CLD	CL. EXTER./DOORING, CIL. WEATH. T-HOLD
10B	VESTIBULE (INT)	(2) 3'-0" X 7'-0"	D3	1-3/4"	NO	SOLD	TEMP	TSR	PT	PT	PT	PT	PT	PT	6'-0" X 7'-0"	FI	HAM	CL. EXTER./DOORING, CIL. WEATH. T-HOLD
10A4	SANITARY (INT)	(2) 3'-0" X 7'-0"	D4	1-3/4"	NO	SOLD	F-R	TSR	PT	PT	PT	PT	PT	PT	6'-0" X 7'-0"	FI	HAM	CL. EXTER./DOORING, CIL. WEATH. T-HOLD
10B4	SANITARY (EXT)	3'-0" X 7'-0"	D2	1-3/4"	NO	INSUL.	---	TSR	PT	PT	PT	PT	PT	PT	3'-0" X 7'-0"	FI	HAM	CL. EXTER./DOORING, CIL. WEATH. T-HOLD
10A4	PASTORS OFFICE	3'-0" X 7'-0"	D5	1-3/4"	NO	SOLD	---	TSR	PT	PT	PT	PT	PT	PT	3'-0" X 7'-0"	FI	HAM	CL. EXTER./DOORING, CIL. WEATH. T-HOLD
10B4	PASTORS OFFICE	3'-0" X 7'-0"	D5	1-3/4"	NO	INSUL.	---	TSR	PT	PT	PT	PT	PT	PT	3'-0" X 7'-0"	FI	HAM	CL. EXTER./DOORING, CIL. WEATH. T-HOLD
106	SANITARY (EXT)	3'-0" X 7'-0"	D2	1-3/4"	NO	INSUL.	---	TSR	PT	PT	PT	PT	PT	PT	3'-0" X 7'-0"	FI	HAM	CL. EXTER./DOORING, CIL. WEATH. T-HOLD
106	MENS ROOM	3'-0" X 7'-0"	D5	1-3/4"	NO	SOLD	---	TSR	PT	PT	PT	PT	PT	PT	3'-0" X 7'-0"	FI	HAM	CL. EXTER./DOORING, CIL. WEATH. T-HOLD
107	WOMEN'S ROOM	3'-0" X 7'-0"	D5	1-3/4"	NO	SOLD	---	TSR	PT	PT	PT	PT	PT	PT	3'-0" X 7'-0"	FI	HAM	CL. EXTER./DOORING, CIL. WEATH. T-HOLD
109	UTILITY ROOM	3'-0" X 7'-0"	D5	1-3/4"	NO	SOLD	---	TSR	PT	PT	PT	PT	PT	PT	3'-0" X 7'-0"	FI	HAM	CL. EXTER./DOORING, CIL. WEATH. T-HOLD
110	JANITOR'S CLOSET	3'-0" X 7'-0"	D5	1-3/4"	NO	SOLD	---	TSR	PT	PT	PT	PT	PT	PT	3'-0" X 7'-0"	FI	HAM	CL. EXTER./DOORING, CIL. WEATH. T-HOLD

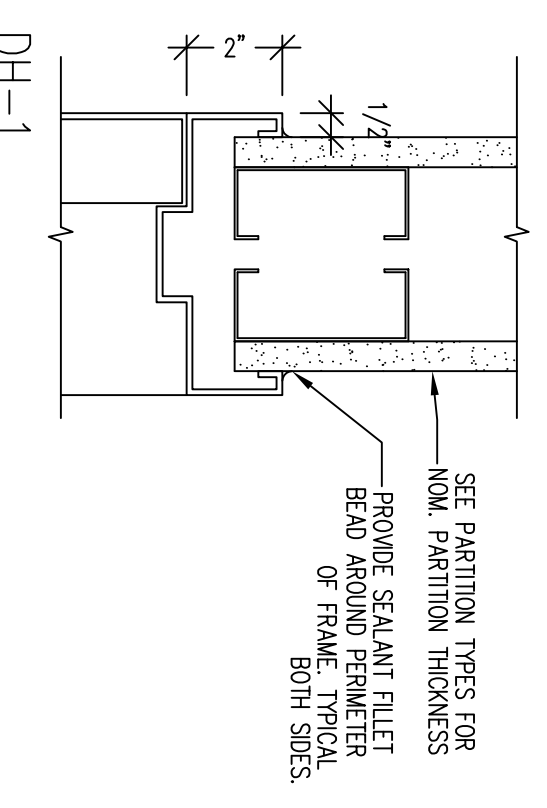
* CONTRACTOR SHALL COMPONENT ALL DOOR USE GLAZING AND HARDWARE SELECTIONS WITH OWNER PRIOR TO INSTALLATION. ALL PRE-GLAZED DOORS SHALL HAVE PRE-GLAZED GLAZING. GLAZING IN ALL OTHER DOORS SHALL BE TEMPERED. ALL DOOR HARDWARE SHALL BE BARBER-HOTEL DURA-TYPE HARDWARE. ALL EXCESS DOORS SHALL BE EQUIPPED WITH FINISH HARDWARE, OR PRE/PAC/HARDWARE IF PRE-GLAZED.

DOOR SCHEDULE LEGEND

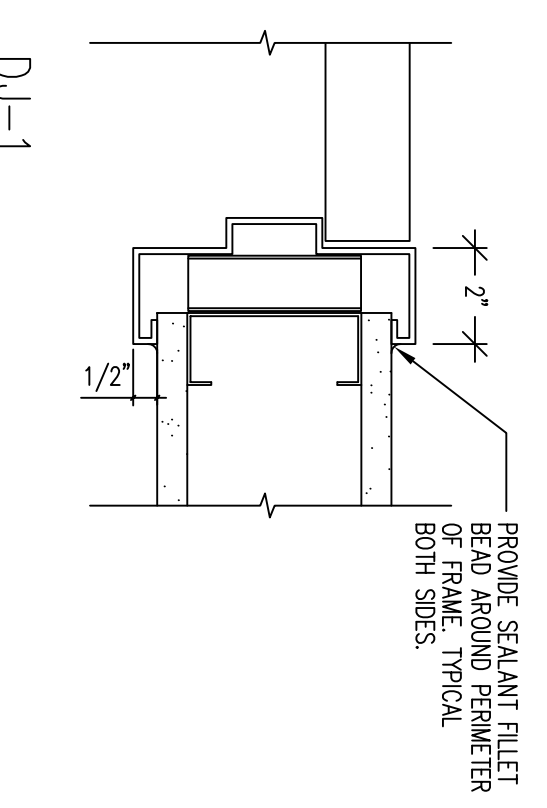
NOTE: FACE DIMENSION OF DOOR FRAMES TO BE 2" UNLESS NOTED OTHERWISE.
 WF = VERIFY IN FIELD
 MATERIALS & FINISHES
 ALUM = ALUMINUM
 FAC = FACTORY FINISH. SEE SPECIFICATIONS
 HM = HOLLOW CORE METAL
 INSUL = INSULATION
 HOLLOW = HOLLOW DOOR
 GLAZING UNITS WITH 1/4" GLAZING UNITS & BOLTS (AT FACE UNITS & BOLTS) SHALL BE TEMPERED. INTER & EXTER LITS
 PT = FINISH SCHEDULE
 F-R = PRE-GLAZED GLAZING
 SOLD = SOLID PARTICLE CORE
 TEMP = TRAVEL STAIN & POLYURETHANE
 TSMP = 1/4" THICK FULLY TEMPERED SAFETY GLAZING
 WD = WOOD

HARDWARE FINISHES

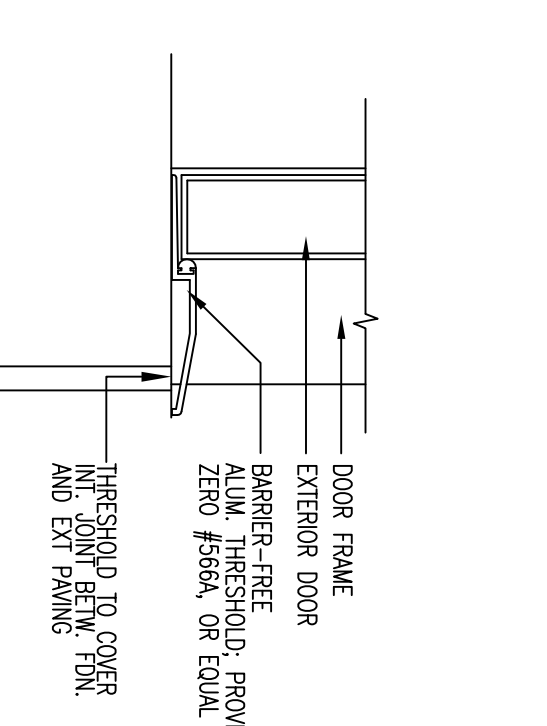
REQUIREMENTS ARE NOT SHASTINE AND ARE REFERRED ONLY TO INDICATE CERTAIN FUNCTIONAL ALL HARDWARE SETS SHALL BE COMPLETE GENERAL, PROVIDE DUST-PROOF STIKERS AT ALL VERTICAL AND EXTER DEVICES
 ARB = AUTOMATIC FLUSH BOLTS (AT MAKEUP LEAF) & COMBINATION
 CL = CLOSER ON EVERY LEAF
 CIL = PROVIDE KEYS OR OTHER DEVICES ON DOORS
 EXTER = EXTER DEVICES - ONE OF THE EXTER DEVICES AT EACH PAIR
 F/EVERY = ONE PER PAIR OR SERIES OF DOORS
 HAW = HAWK STICKERS
 HOSP LATCH = HOSPITAL-TYPE PADLOCK LATCH
 HSP LATCH = HOSPITAL-TYPE PADLOCK LATCH
 MAC = ELECTROMAGNETIC HOLDERS
 REQL = REQUIRABLE MULLION (STEEL)
 SOUND = SOUND SEALS @ HEAD & JAMBS
 SHIF = SHIFTS UNMOUNTED
 THLD = ADA COMPLIANT WEATHER-RESISTING AT HEAD, JAMBS, DOOR BOTTOMS, INCLUDING ADA THRESHOLD



DH-1
3A FOR 2HR FIRE SEPARATION
(2 LAYERS 3/8 GWB)
INTERIOR STUD HEAD



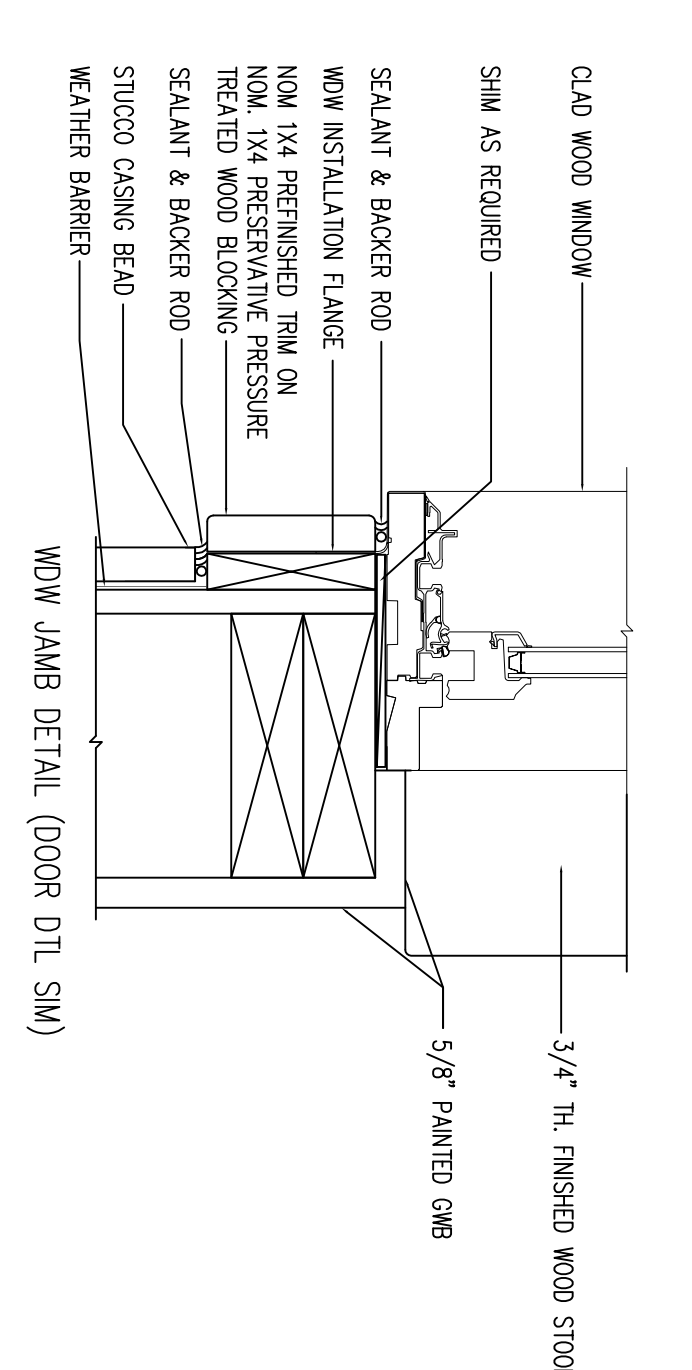
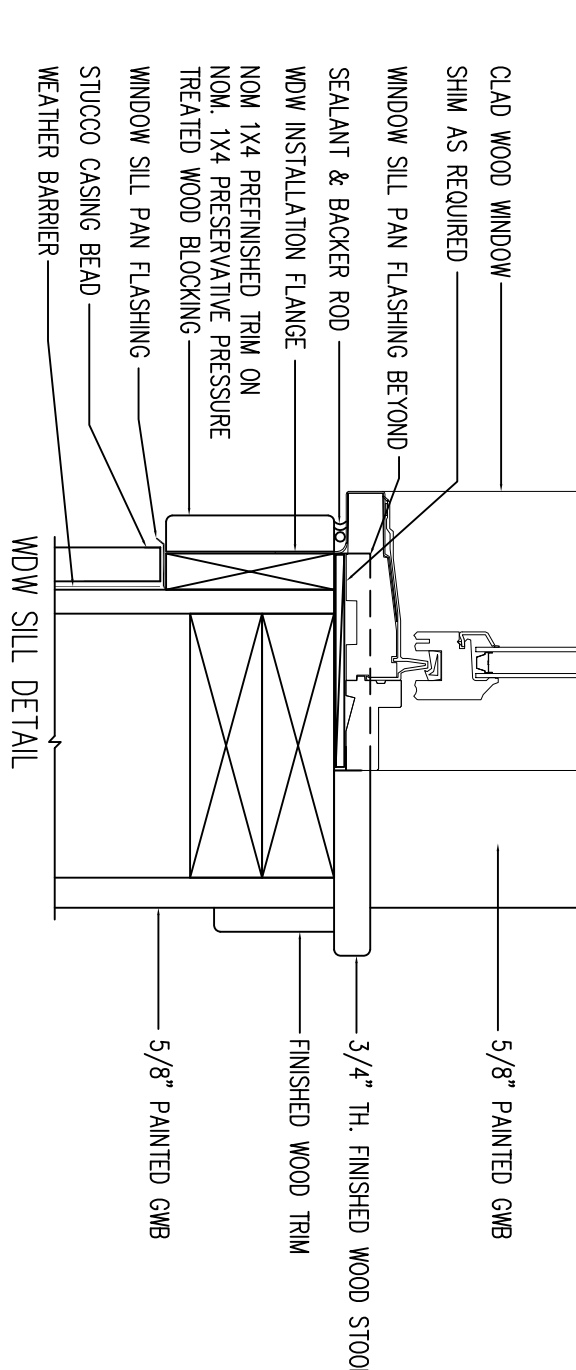
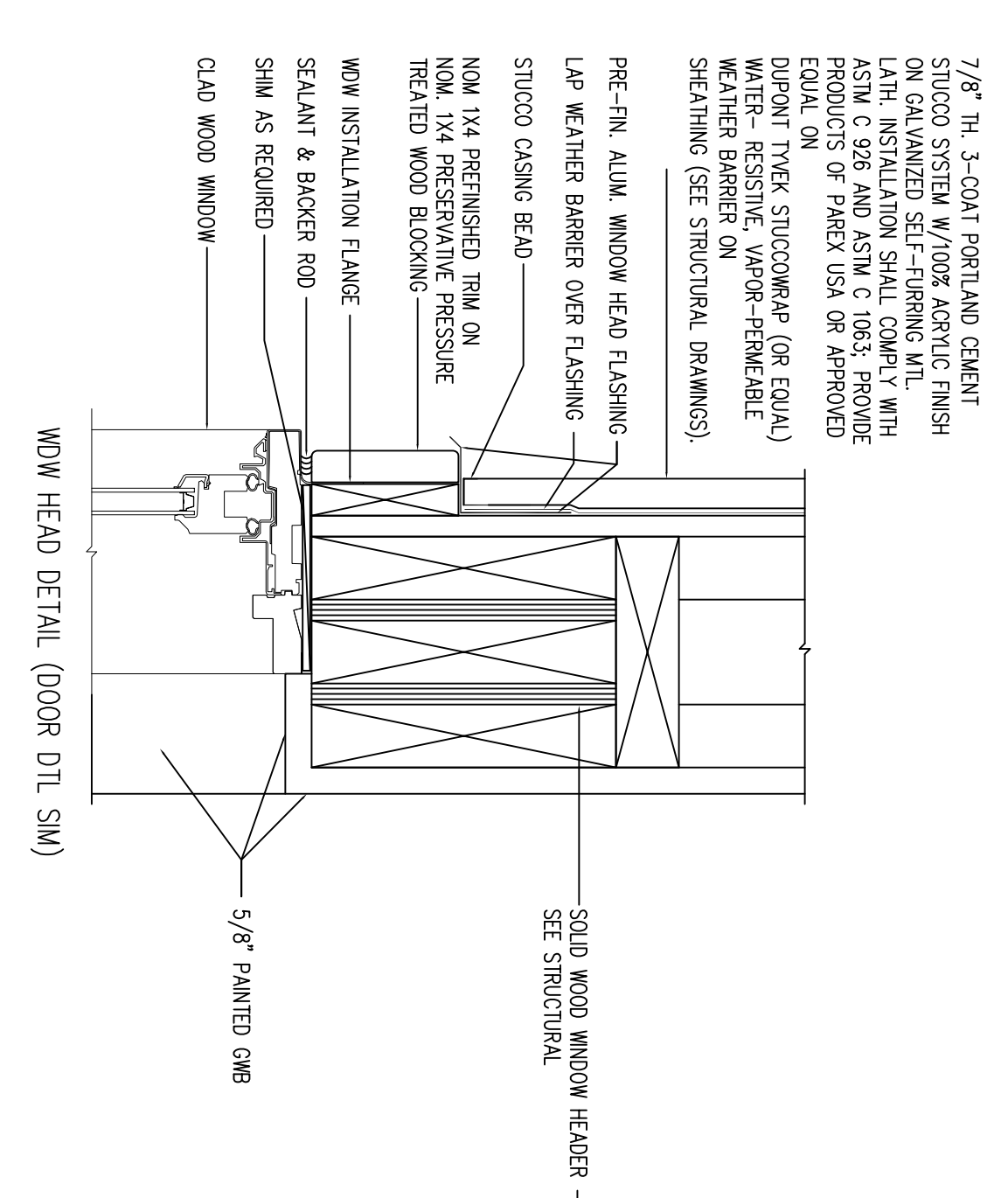
DH-1
3A FOR 2HR FIRE SEPARATION
(2 LAYERS 3/8 GWB)
INTERIOR STUD JAMB



EXTERIOR THRESHOLD

1 TYP. INT. DOOR DETAILS

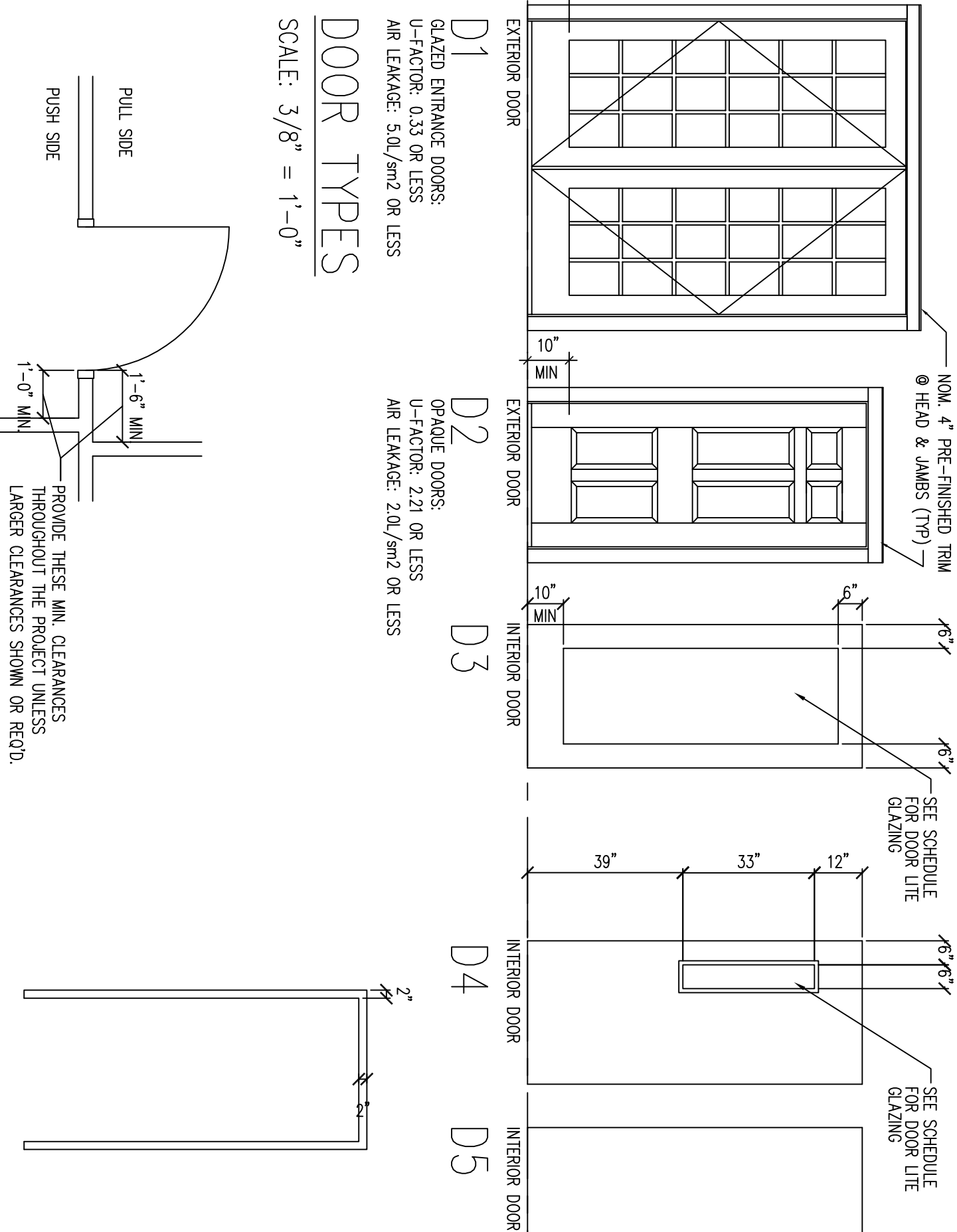
SCALE: 3" = 1'-0"



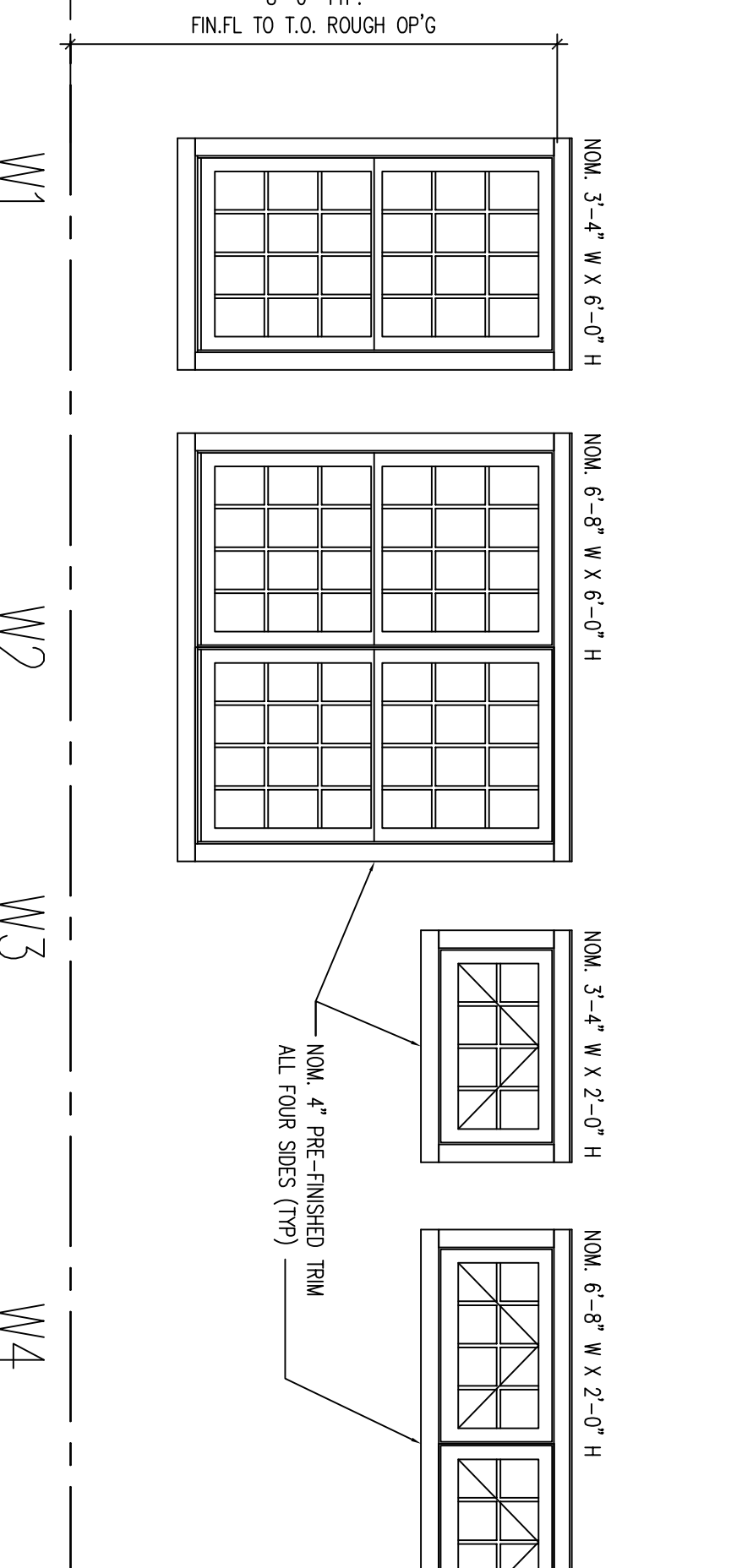
2 TYP. WINDOWS DETAILS

SCALE: 3" = 1'-0"

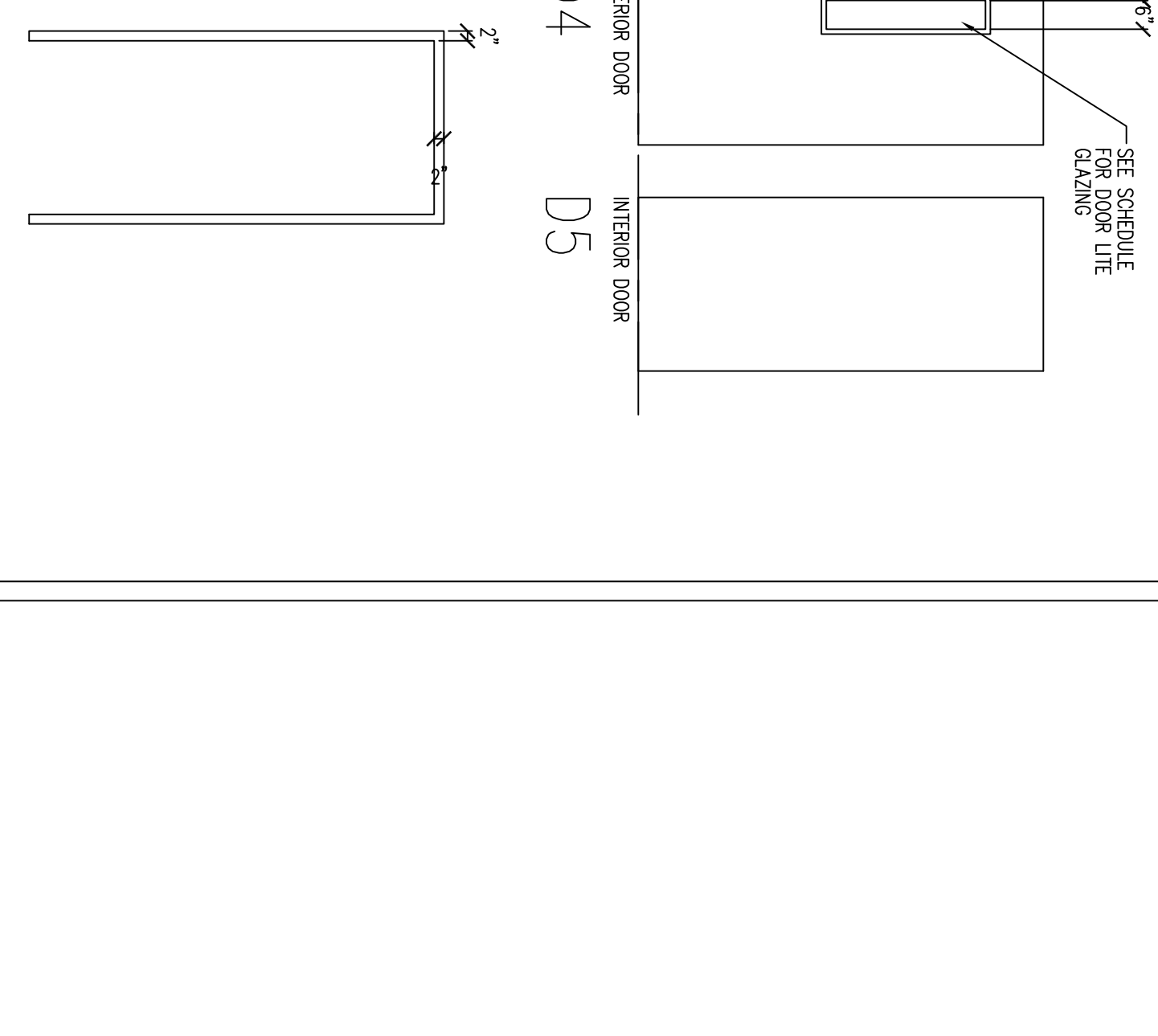
- NOTES:**
- WINDOWS SHALL BE GLAZED OPERABLE WOOD DOUBLE HING AND AWMING WINDOWS W/LOWE INSULATING DOUBLE PANE GLAZING & INSECT SCREENS, UNLESS SUBSTITUTION APPROVED BY OWNER.
 - PROVIDE MANUFACTURER'S APPROVED ACCESSORIES & REINFORCEMENTS FOR A COMPLETE INSTALLATION, INCLUDING AS REQUIRED FOR COMBINING MULTIPLE UNITS.
 - INSTALL IN STRICT ACCORDANCE WITH BOTH WINDOW AND STOLCO MANUFACTURERS RECOMMENDED METHODS DETAILS FLASHINGS AND FASTENERS FOR THE SPECIFIC WALL SYSTEMS TO INSURE A WATER TIGHT INSTALLATION.
 - FOLLOW MANUFACTURERS RECOMMENDATIONS FOR COMBINING UNITS, INCLUDING PROVIDING SUPPORT MULLIONS WHETHER OR NOT SHOWN IN THESE DOCUMENTS. CONSULT WITH MANUFACTURER AND/OR STRUCTURAL ENGINEER AS REQUIRED.
 - PROVIDE MANUFACTURER'S WARRANTIES ON GLASS, NON-GLASS COMPONENTS AND FINISHES.



TYPICAL BARRIER-FREE DOOR DIM'S.
SCALE: 3/8" = 1'-0"



WINDOW TYPES
SCALE: 3/8" = 1'-0"



FRAME TYPE
SCALE: 3/8" = 1'-0"

ALTHOUSE, JAFFE & ASSOCIATES, LLC
ARCHITECTS
759 BERKOWENVILLE ROAD
PERKOWENVILLE, PA 18074
TEL: 610.254.9360 610.724.9892 FAX

In His Presence Church
Black6701, Ltd 3
Franklin Township, NJ
Proposed New Church Building

Date: 3/2/2015
Revision:
Doors and Windows
Scale: As Noted
Drawn By: 131246
Checked:
A601

The Architect warrants that the documents are made and under stated rights, including the copyright. They are not to be used for other projects without the Architect's written consent.